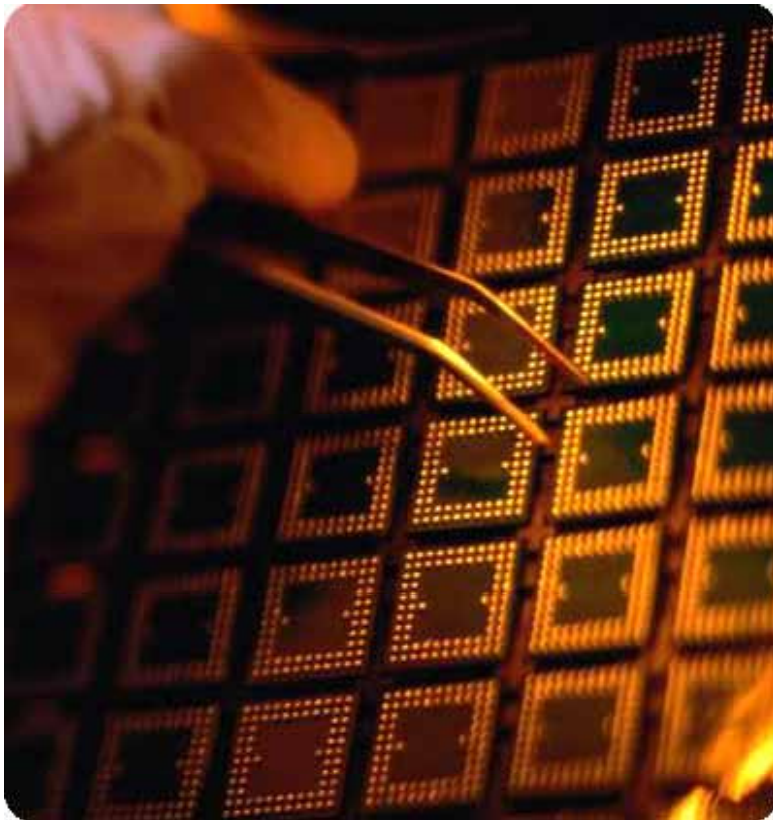


isMedia CCM Evaluation System

(Manual Type : CMT - K42)

2009.04.20



isMedia

- Address : #406 HanLim Venture-Town, 689-6, Gumjung-Dong, Gunpo-City, Gyunggi-Do, Korea. (435-862)
- Tel : (031) 427-8411 Fax : (031) 427-8414
- E-Mail : ismedia@ismedia.co.kr ; jakim@ismedia.co.kr
- Homepage : <http://www.ismedia.co.kr>

- 1.
- 2.
3. **Mechanical Specification**
 - 9.1 Machine picture
 - 9.2 Machine using sample
 - 9.3 Machine Layout
 - 9.4 Machine specification
 - 9.5 Requirement PC Specification

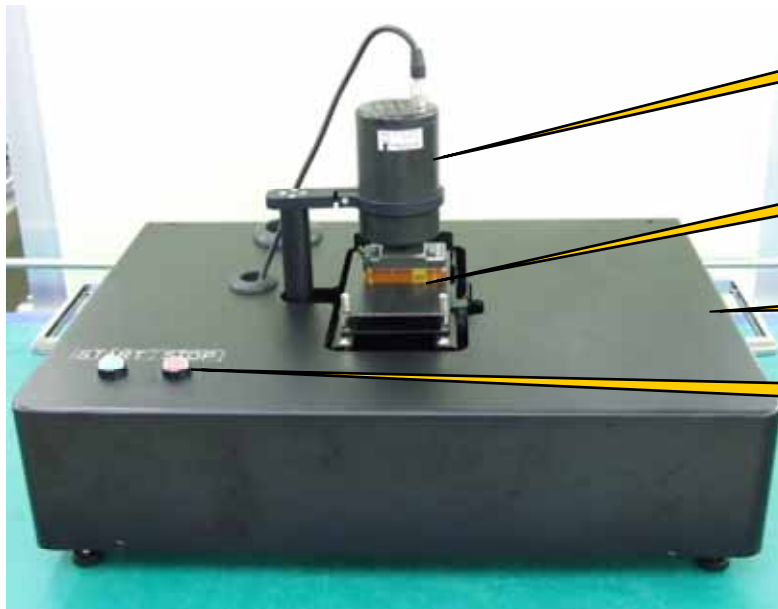
- ◆ isMedia CMT-K42 system fixed focus lens type
manually focus adjustment image test system .
- ◆ Evaluation system image sensor interface B/D S/W
가 (1/4V~4.6V / 4ch), 가 (1MHz ~ 68MHz)
- ◆ O/S Test Leakage current 가 PMU(Precision Measurement Unit)
- ◆ Video Data Camera Link Video Bus CCM Control USB
2.0 Interface .
- ◆ Image Shading , Dust Defect White LED lighting source
Image sensor 가

- ◆ Real distance Focus adjust – Booth
- ◆ Manual Focus adjust – 가 Collet Focus .
- ◆ Focus chart 가 .
- ◆ Inspection option & Resister setting S/W .
- ◆ Module change Socket Socket PCB .
- ◆ Low cost

3. Mechanical Specification

CMT-K42

3.1 Machine Picture



LED light

Socket with board

Control box

Start/Stop switch



IVI-K42

[IVI-K42]

3. Mechanical Specification

CMT-K42

3.2 Machine using sample



[Chart]

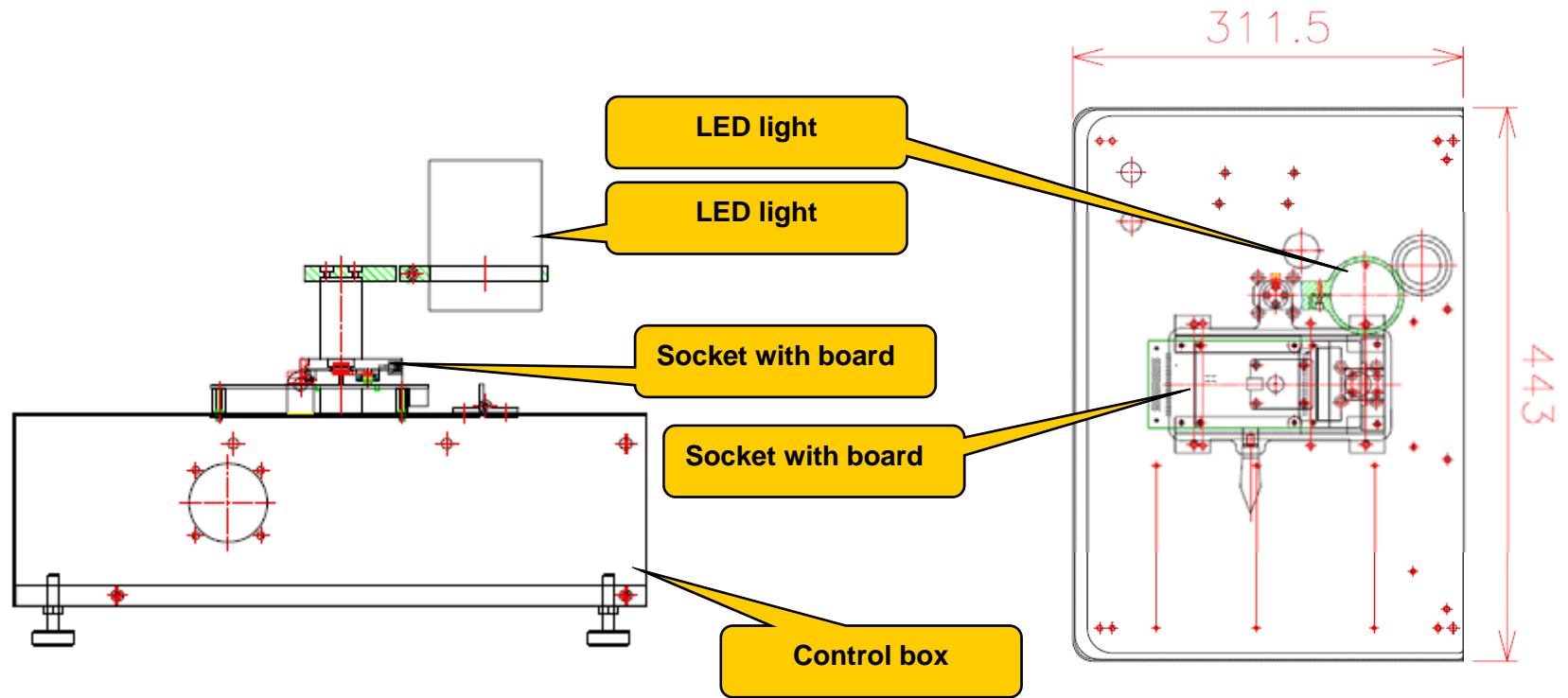


[Chart]

3. Mechanical Specification

CMT-K42

3.3 Machine Layout



3. Mechanical Specification

CMT-K42

3.4 System Mechanical Specification

Items	Description	Reference
Size	443 X 311.5 x 240mm	
Illumination	White LED Φ 50 mm	Luminance Control by S/W
Control axis	1 cylinder	For moving LED lighter

3.5 Requirement PC Specification

Items	Description	Reference
Main Processor	Intel Pentium4 3.2GHz or Higher	
Memory / Hard Disk	512MB / 80GB	
Monitor	17 inch LCD	
Operating System	Microsoft Windows XP	